

SOUTHWEST FLORIDA YACHTS[®]

INC.



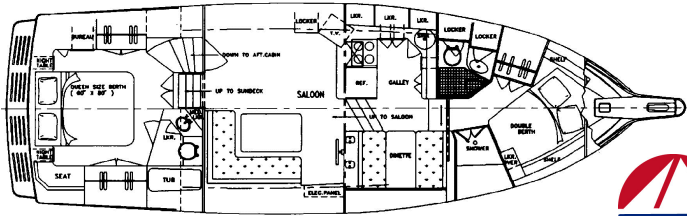
Jefferson 45 Cockpit Motor Yacht

Twin Engine, Double Cabin

“LATTITUDES”



Comments: *The Jefferson 45 is known for its comfort and style. “Lattitudes” is a great vessel for cruising Southwest Florida. With two double cabins and two heads, both Skipper and crew will have comfortable accommodations. This vessel is equipped with the real cruiser in mind. From the complete electronics package to the dinghy with 9.8 outboard on it, “Lattitudes” will make a great home for your vacation afloat! Join us soon!*



Inventory and Equipment List

Jefferson 45 Cockpit Motor Yacht

LATTITUDES

Fiberglass motor yacht w/bow thruster
Length overall: 45'
Beam: 14' 5"
Draft: 3' 0"
Bridge clearance: 19 ft.
Displacement: 28,000 lbs
Sleeps: 6
Fuel capacity: 420 gal. (2 active tanks @ 210 gal. ea.)
Water capacity: 200 gallons
Berths:
 Forward Cabin, double – 78" x 46"
 Salon: 64" x 52"
 Aft cabin, Island Queen: 82" x 58"
Headroom: 6' 6"
Interior: Teak
Cabin flooring: Carpet & teak parquet
Entry door: Aft, from enclosed aft deck
Galley down
Dining table with bench seating
Wet bar on aft deck
Heads: (1) electric fwd. and (1) Vacu-flush aft
Holding tank: 40 gal.
Macerator pumps
Fwd and aft heads with showers; transom shower
Interior lighting: 12 VDC and 110 VAC
Power - Twin Cummins 6BTA 5.9 M2 300 hp diesels
Cruise speed: 15-16 knots (max. 20)
Fuel consumption: TBD
Fuel filtration: Dual Racor filters
Generator – Kohler 8 kw
Engine room lighting and ventilation
Bennett trim tabs and 4-blade props
12 vdc outlet at lower helm
Air conditioning and heat: Aqua Air & Cruisair 2 units total
Batteries: Heavy-duty marine batteries
Battery Charger: Newmar HDM 30
Electrical control panels: 12 VDC and 110 VAC
Shore power system: 50 amp shore power cord
Steering: Hydraulic Sea Star
Emergency tiller: Autopilot works as one
Hot and cold pressure water system, 12 VDC & Dockside
Refrigerator/ Freezer: Norcold 12 VDC/ 120 VAC
Icemaker: Uline icemaker, aft deck
Stove and oven: Galley Maid 3-burner electric
Microwave Oven
Washer/ Dryer: Splendide
Bilge pumps: (2) bilge pumps with float switches
Sirius Radio/ CD player/Stereo Jensen MSR 4500 on f/b
TV's: LG 32" Color TV with Vizio sound bar in salon,
 Toshiba TV/DVD player in fwd cabin and
 Element flat screen in master stateroom
Central vacuum system
Hand-bearing compass

Compasses: 5" Ritchie Powerdamp & 4" Aquameter
Engine transmission controls: ZF
Engine instrument panel at both helms
Engine and generator hour meters
Autopilot: Garmin GHC-12
VHF Radios: (2) Standard Horizon
Depth sounder: Raymarine DS500X
GPS: Garmin 7212 GPS Map; lower helm GPS 441 chart plotter
Radar: Garmin GMR 18 HD
Air & Electric horn/ Raytheon Ray 420 loudhailer
Ship's bell; Ship's clock
Spotlight: (1) Jabsco 12 VDC
Anchors: Ultra 60 lb. stainless anchor w/ 50 ft. stainless 3/8" chain &
 200 ft. 3/4" rode. Spare 22 lb. Danforth in locker.
Anchor windlass: Quick electric with wireless remote
Handheld shower on transom
Engine and generator spare parts
Tool kit
Flare kit
First Aid Kit
Ship's files and manuals
Binoculars
Navigation and plotting tools
Ship's Logbook
Charts and Cruising Guide
Navigation Rules
Flashlights
Life jackets (6) Type II
Life ring
Bridge cushions
Navigation, running and anchor lights
Deck lighting
Fire extinguishers
Automatic engine room fire protection
Smoke and CO detector
Docklines and fenders
Deck hose and nozzle
Deck bucket and brush
Boathook
Swim platform with ladder
US Yacht flag and staff
BBQ Grill, propane
Screens for hatches & ports
Hard top on aft deck
Aft deck enclosure
Aft deck seating: Loveseat & 2 chairs
Inflatable dinghy: AB 10 ft. RIB
Dinghy oars, fuel tank and accessories
Dinghy lifting harness
Outboard motor: Tohatsu 9.8 hp, 4-stroke
Linens, pillows and blankets for (6)
Towels for (6)
Dishes, cutlery and galley gear for (6)

Equipment may vary • Specifications are approximate • Capacities are approximate

Revised 11/1/16

